

EMERGENCY MANAGEMENT (COVID-19)
(CURFEW) (NO. 3) DIRECTIVE, 2021

DIRECTIVE February 3 - 17, 2021

CURFEW: 7:00 P.M. TO 6:00 A.M. DAILY



© Donna Reddman Creative 2020



COVID
COMMUNICATIONS
UNIT BARBADOS

30/01/2021

DIRECTIVE 3 | FEB 3 - 17, 2021

CURFEW 7:00 P.M. TO 6:00 A.M. DAILY



CONTENTS



Standard Rules For Everyone	3
Rules: General Public	5
Rules: Businesses & Organisations	6
Rules: Essential Services	7
Essential Services	8
Non-Essential Services	9
Mini-Marts	15
Places of Religious Worship	16
Beaches & Parks	17
Masks & Face Coverings	18
Public Transportation	21
Travellers To Barbados	22
Penalty	24
How To Wash Your Hands	25
How To Put On A Mask	26
How To Wear A Mask	27
How To Take Off A Mask	28
Caring For Your Mask	29

DIRECTIVE 3 | FEB 3 - 17, 2021

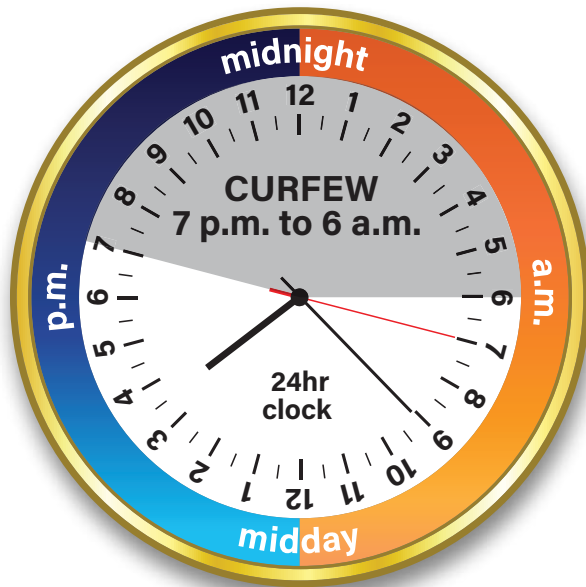
CURFEW 7:00 P.M. TO 6:00 A.M. DAILY



STANDARD RULES FOR EVERYONE

See Clauses 1, 4 (e), 6 (1) and 8

- A curfew is in effect from February 3 - 17, 2021 between the hours of 7:00 p.m. and 6:00 a.m.
- All persons who are in public places shall wear a face mask AND comply with the physical distancing protocols, unless they are members of the same household.
- Every person and business establishment shall comply with this Directive and any other protocols as may be established by the Chief Medical Officer and the Covid-19 Protocol Monitoring Unit.
- No parties.
- No banquets, balls, dances or receptions.
- No meetings of a fraternal society, private or social club or civic association or organisation.
- No “bus crawls”, “limes” or karaoke events.
- No picnics, bus or other vehicular excursions or boat cruises.
- No social events.



DIRECTIVE 3 | FEB 3 - 17, 2021

CURFEW 7:00 P.M. TO 6:00 A.M. DAILY



STANDARD RULES FOR EVERYONE *cont'd*

See Clauses 6 (2), 8 , 12, 13, 14 and 15

- No sporting activities.
- No visits to places of quarantine or isolation.
- No visits to a prisoner or a ward of a Government Industrial School. Visits may be made to transact business.
- No more than one person at any time shall visit a patient in a hospital, nursing home, senior citizens' home and facilities for the treatment of persons with addiction or a dependency on drugs or a narcotic substance.
- No transmission of video or audio recording any person or disclosing of identities of anyone who is in quarantine or isolation.



The Hon. Mia Amor Mottley, QC, MP, EGH, OR
Prime Minister of Barbados
Address to the Nation, January 26, 2021

DIRECTIVE 3 | FEB 3 - 17, 2021

CURFEW 7:00 P.M. TO 6:00 A.M. DAILY



RULES: GENERAL PUBLIC

See Clauses 2(1), 2(1)(a), 2(1)(b), 2(3), 9 and 10

Every person shall remain in the confines of his residence and its curtilage.

- Except where the person is an employee or member of an essential service.
- Except the person has an emergency.
- A request may be made to the Attorney-General, through www.gov.bb, for him to grant emergency passes.
- No more than 5 persons shall remain outdoors as a group unless they are members of the same household and are within the curtilage of a residence.

- No more than 8 members of the same household shall remain outdoors as a group except in the curtilage of their residence.
- No person shall leave his residence without picture identification: either their Barbados Identification Card or driving license or passport and shall present one when requested to do so by a person in authority.



DIRECTIVE 3 | FEB 3 - 17, 2021

CURFEW 7:00 P.M. TO 6:00 A.M. DAILY



RULES: BUSINESSES & ORGANISATIONS

See Clauses 3 (3), 4 and 20

All businesses and organisations shall comply with the directives and protocols:

- Follow strict distancing protocols for staff and all persons who enter their premises.
- Provide hand sanitising stations for staff and all persons who enter their premises.
- Have the smallest number of staff needed to function safely attend work.

- Restrict the number of persons within or outside that establishment at any one time in order to ensure that a distance of at least 6 feet is maintained between every person.
- Ensure that persons do not assemble otherwise than for the purpose of transacting business.

Any owner or operator who contravenes the above, in addition to the penalty, is liable to have his exemption revoked.



DIRECTIVE 3 | FEB 3 - 17, 2021

CURFEW 7:00 P.M. TO 6:00 A.M. DAILY



RULES: ESSENTIAL SERVICES

(See Clause 1, 2 (1) and 2 (2))

- No person, except an employee or member of an essential service, or who has an emergency, shall leave his residence between 7:00 p.m. and 6:00 a.m. during the curfew.
- Essential Workers must always travel with work identification.



DIRECTIVE 3 | FEB 3 - 17, 2021

CURFEW 7:00 P.M. TO 6:00 A.M. DAILY



ESSENTIAL SERVICES

See Clauses 3 (2), , 3 (4) and 3 (5)

TYPE OF NON-ESSENTIAL SERVICE APPROVED TO OPERATE	APPROVED HOURS OF OPERATION	IMPORTANT NOTES
The Public Service and Statutory Corporations	As and when required	Under the direction of the Head of the Public Service.
Ministry of Agriculture Plant Quarantine and Veterinary Services	As Needed	
Electricity Services	All Day	
Telecommunications	All Day	



All businesses shall follow the protocols outlined on page 6



DIRECTIVE 3 | FEB 3 - 17, 2021

CURFEW 7:00 P.M. TO 6:00 A.M. DAILY



NON-ESSENTIAL SERVICES

See Clauses 3 (1) AND 3 (6)

Every non-essential service shall remain closed, except those on the following pages, which may open only between the hours specified.

Businesses and establishments that cannot open may continue their operations where the employees can work exclusively from their residences.

All businesses shall follow the protocols outlined on page 6



DIRECTIVE 3 | FEB 3 - 17, 2021

CURFEW 7:00 P.M. TO 6:00 A.M. DAILY



TYPE OF NON-ESSENTIAL SERVICE APPROVED TO OPERATE	APPROVED HOURS OF OPERATION	IMPORTANT NOTES
Abattoirs, hatcheries & Poultry Processors	7am to 6pm Every day	
Bakeries and Bread Depots	9am to 4pm Every day	For sale of bread
Bakeries	7am to 5pm Every day	For baking of bread
Banks and Credit Unions <i>February 3 - 10, 2021</i> All businesses shall follow the protocols outlined on page 6	8am to 5pm Monday to Friday	Limited services (no retail banking): i. Supporting automatic teller machines; ii. Facilitating internet banking, mobile banking and point of sale transactions; iii. Facilitating electronic payroll; iv. Facilitating night deposits; v. Facilitating wire transfers and international payments and clearings; and vi. Facilitating local payment, clearing and other operations as required for the banking system.

DIRECTIVE 3 | FEB 3 - 17, 2021

CURFEW 7:00 P.M. TO 6:00 A.M. DAILY



TYPE OF NON-ESSENTIAL SERVICE APPROVED TO OPERATE	APPROVED HOURS OF OPERATION	IMPORTANT NOTES
Banks and Credit Unions <i>February 11 - 17, 2021</i>		Resumption of retail banking.
Bill Payment Services	8am to 3pm Monday to Friday only	Example: SurePay
Cleaning Services	7am to 6pm Every day	That clean for essential services and approved non-essential services that may operate as well as commercial properties that require cleaning for environmental purposes.
Delivery Services -Groceries	8am to 6pm Monday to Friday	For groceries, fruits, vegetables.
Delivery Services - Medical	8am to 6pm Every Day	For medical supplies.
Distributive Traders	7am to 5pm Monday to Friday	For the supplies of goods to essential services and approved non-essential businesses.

All businesses shall follow the protocols outlined on page 6

DIRECTIVE 3 | FEB 3 - 17, 2021

CURFEW 7:00 P.M. TO 6:00 A.M. DAILY



TYPE OF NON-ESSENTIAL SERVICE APPROVED TO OPERATE	APPROVED HOURS OF OPERATION	IMPORTANT NOTES
Farms	6am to 6pm Every day	
Fuel Manufacturers, Fuel Storage Facilities and Fuel Distributors	All Day Every day	
Gasoline Stations	7am to 5pm Every day	<ul style="list-style-type: none">• For the sale of products relating to motor vehicles, petroleum products, including liquefied petroleum gas (bottled gas).• For the sale of top-ups for mobile telephones and pharmaceuticals (but not for the sale of food or alcohol)
Hotels, Villas, and other Rental Accommodation, Restaurants	All Day Every day	Excluding gaming rooms, spa, gyms and discotheques. Restaurants open for room service only.

DIRECTIVE 3 | FEB 3 - 17, 2021

CURFEW 7:00 P.M. TO 6:00 A.M. DAILY



TYPE OF NON-ESSENTIAL SERVICE APPROVED TO OPERATE	APPROVED HOURS OF OPERATION	IMPORTANT NOTES
Manufacturing Companies	8am to 5pm Every day	For the production of goods for export.
Mini-marts	8am to 4pm Monday to Friday only	A list of the exempted Mini-marts is provided on page 15 of this Directive. All other mini-marts, shops: “corner shops, “rum shops” and “village shops” shall remain closed.
Supermarkets	8am to 4pm Monday to Friday only	For in-store shopping
Pharmaceutical Manufacturers, Manufacturers of Juices, Soft Drinks, and Dairy Products, Food Processors and Food Distributors	7am to 5pm Every day	

All businesses shall follow the protocols outlined on page 6

DIRECTIVE 3 | FEB 3 - 17, 2021

CURFEW 7:00 P.M. TO 6:00 A.M. DAILY



TYPE OF NON-ESSENTIAL SERVICE APPROVED TO OPERATE	APPROVED HOURS OF OPERATION	IMPORTANT NOTES
Pharmacies	8am to 4pm Every day	For personal shopping and the filling of prescriptions.
Private Veterinary Services	As needed	
Sugar Factories	All Day Every day	
Swimming Pool Services	As needed	
Tyre Shops, Wrecker Services	As needed	And emergency personnel for vehicle response only
Wholesalers of Food Items and Associated Supplies	8am to 3pm Monday to Friday	For the limited purpose of filling orders to essential services and government agencies.

All businesses shall follow the protocols outlined on page 6

See Clause 21

Notwithstanding any provision of this Directive, the Prime Minister nor Attorney General, acting on the advice of the Chief Medical Officer, may direct the owner or operator of any business or establishment to cease to operate for the duration of this Directive.

DIRECTIVE 3 | FEB 3 - 17, 2021

CURFEW 7:00 P.M. TO 6:00 A.M. DAILY



MINI-MARTS

In addition to Supermarkets, the following Mini-Marts are allowed to open in accordance with this Directive

ST. LUCY

- Mobree's Minimart, Pie Corner
- Fair Deals, Crab Hill
- Star Mart, Trents
- St. Elmo's Minimart, Half Moon Fort
- MSC Minimart, Sutherland Hill (Checker Hall)
- Sobers Variety - Checker Hall - sells livestock feed

ST. PETER

- S & H Enterprises, Rose Hill

ST. ANDREW

- Belleplaine Supermarket, Belleplaine
- Sober's Minimart, Shorey Village
- The Meat and Veg Corner Shop, Gregg's Farm
- SSS Variety, Harewoods Road, Hillaby

ST. JAMES

- Hill Side Variety Store, Orange Hill
- Sonia's Variety, Husbands Road, Mount Standfast

ST. THOMAS

- Two Guys Minimart, Welchman Hall
- Bridgefield Variety, Bridgefield
- Melrose Variety, Melrose
- Rock Hall Variety, Rock Hall

ST. JOSEPH

- Mumus Supermarket, Sugar Hill
- Cleavers Hill Supermarket, Cleavers Hill
- SKPNA Enterprises Minimart, Blackman's Tenantry

ST. JOHN

- Venture Trading, Venture
- Palm Mart, Four Roads

- J's Stop N Shop, Massiah Street
- 3Ds Minimart, Sargeant Street

ST. GEORGE

- A & S Minimart, St. Judes
- Newbury Minimart, Newbury
- Ellerton Mart, Ellerton
- Blenman's Variety, Dash Valley Main Road, Dash Valley

ST. PHILIP

- Volleys Minimart, Blades Hill
- Marshall's Minimart, Four Roads
- Provigo Mart, Wellhouse
- Chayreenies Ltd., Ruby Main Road

CHRIST CHURCH

Fair Deals Inc., St. Patricks

All businesses shall follow the protocols outlined on page 6

8 A.M. TO 4 P.M. MONDAY TO FRIDAY ONLY

DIRECTIVE 3 | FEB 3 - 17, 2021

CURFEW 7:00 P.M. TO 6:00 A.M. DAILY



PLACES OF RELIGIOUS WORSHIP

See Clause 5

Shall open only for the conduct of:

THE STREAMING OF RELIGIOUS SERVICES: Only 10 persons including the officiant shall be physically present.

FUNERALS: No more than 10 mourners, one officiant and

the funeral director and the necessary staff shall attend a funeral.

WEDDINGS: Attended by the bride and bridegroom, 2 witnesses and the marriage officer. No person shall host or attend a reception.



DIRECTIVE 3 | FEB 3 - 17, 2021

CURFEW 7:00 P.M. TO 6:00 A.M. DAILY



BEACHES & PARKS

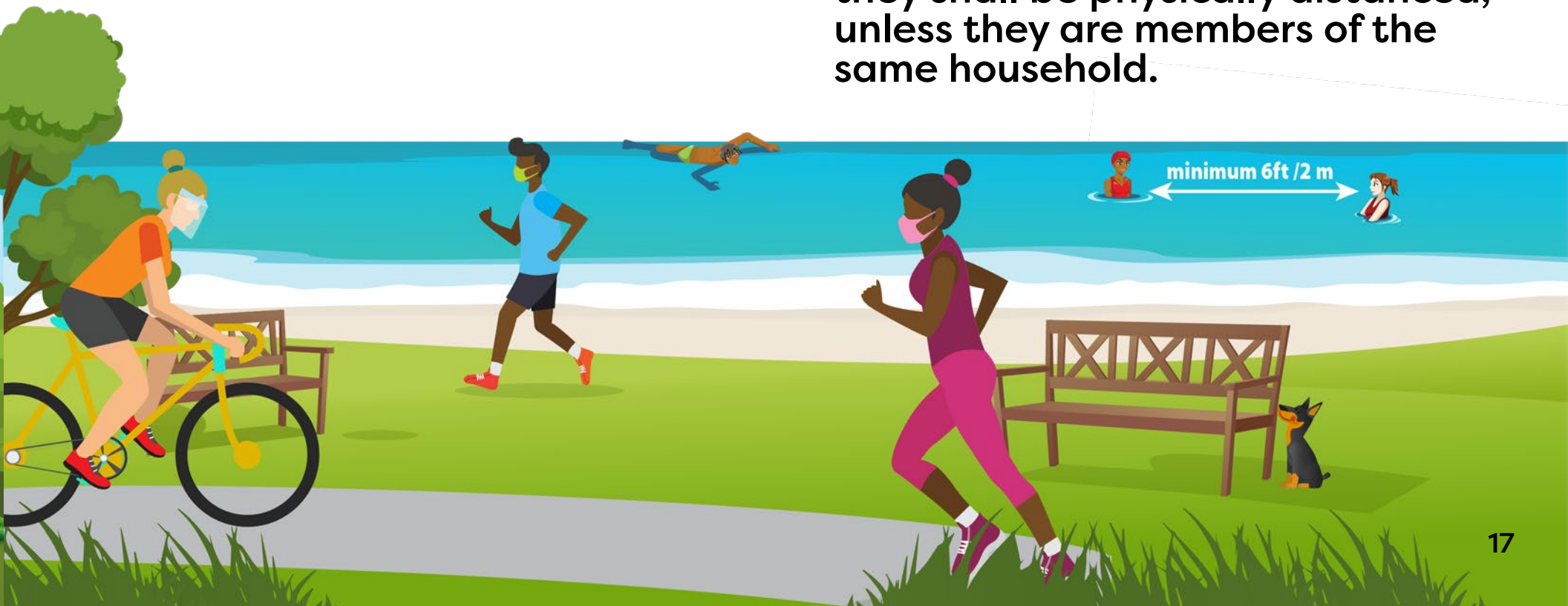
See Clause 7

Beaches and parks shall be open between the hours of 6 a.m. and 9 a.m. only.

- A person may only visit a beach or a park for swimming and exercise.

Persons may exercise outdoors, other than at beaches and parks, between the hours of 6 a.m. and 9 a.m. only.

- No more than 2 persons shall exercise together, in which case they shall be physically distanced, unless they are members of the same household.



DIRECTIVE 3 | FEB 3 - 17, 2021

CURFEW 7:00 P.M. TO 6:00 A.M. DAILY



MASKS & FACE COVERINGS

See Clauses 11(1) and 11(2)

Everyone shall wear a face mask, face shield or face-covering which covers the mouth, nose and chin:

- In a public building or public place;
- For travel on a public service vehicle or other public transport whether as a driver, conductor or passenger.

An individual who has responsibility for child, shall provide and ensure that the child has and wears a face mask, face shield or face covering.



DIRECTIVE 3 | FEB 3 - 17, 2021

CURFEW 7:00 P.M. TO 6:00 A.M. DAILY



MASKS & FACE COVERINGS

See Clauses 11(3), 11(5) and 11(7)(c)

The owner or operator of any business or establishment, shall ensure that no member of the public is permitted to enter or remain within business or establishment, unless the person is wearing a face mask, face shield or face covering which covers his mouth, nose and chin.

Exceptions:

Children under 5 years of age are not required to wear a face mask, face shield or face covering.

When the person is eating, drinking, taking medication or exercising.



MASKS & FACE COVERINGS

See Clauses 11(6), 11(7)(a), 11(7)(b), 11(7)(d)

Exceptions *cont'd*

A person may remove his mask if he is required to speak but only for the duration of the speech and if he is physically distanced from other persons present.

A person may not put on, wear or remove a face mask, face shield or face covering if he has any medical, physical or mental illness or disability which prevents him from so doing.

Where the person is travelling with or providing assistance to another person and the other person relies on lip-reading to communicate with the first person.

Where a request is made of the person to remove his face mask, face shield or face covering temporarily for security and identification purposes, if necessary, for the purpose of entering a building or receiving services.



DIRECTIVE 3 | FEB 3 - 17, 2021

CURFEW 7:00 P.M. TO 6:00 A.M. DAILY



PUBLIC TRANSPORTATION

See Clause 16

- An owner or driver of a public service vehicle who fails to comply with any provision of this Directive, in addition to the penalty is liable to have his license or permit suspended.
- All public service vehicles are limited to carrying 60% of their authorised seating capacity.
- The windows of public service vehicles shall remain open throughout the journey, except during inclement weather, unless they are windows sealed by the manufacturer.
- All motor omnibuses and public service vehicles are required to be sanitized before and after boarding passengers at the following terminals:
 - (a) Mangrove Bus Depot;
 - (b) Oistins Bus Depot;
 - (c) Constitution Road Terminal;
 - (d) Fairchild Street Terminal;
 - (e) Princess Alice Terminal; and
 - (f) Speightstown Terminal.



DIRECTIVE 3 | FEB 3 - 17, 2021

CURFEW 7:00 P.M. TO 6:00 A.M. DAILY



TRAVELLERS TO BARBADOS

See Clauses 17 and 18

Every traveller to Barbados shall:

- Comply with the Travel Protocols for entry into Barbados and the Health and Safety Protocols for the Tourism Sector.
- Comply with this Directive.
- Give details of his accommodation in Barbados to the Chief Immigration Officer and to the Chief Medical Officer.
- A traveller to Barbados who gives false or misleading information on arrival in Barbados to the Chief Immigration Officer or the Chief Medical Officer concerning his accommodation in Barbados contravenes this Directive.



TRAVELLERS TO BARBADOS

See Clause 19

Quarantine

A person who is placed in quarantine shall:

- Not leave the room in which he is quarantined without the consent of the Chief Medical Officer.
- Not receive guests.
- Obey the directions of the Chief Medical Officer.



PENALTY

See Clause 22

Any person who contravenes this Directive or fails to comply with any condition specified by the Chief Medical Officer or the Unit is guilty of an offence and is liable on summary conviction to a fine of \$50,000 or to imprisonment for a term of one year or to both pursuant to paragraph 15(1) of the Emergency Management(COVID-19) (No. 3) Order, 2020 (S.I. 2020 No. 71).

HOW TO WASH YOUR HANDS

1. WET HANDS



2. USE SOAP



3. RUB PALM TO PALM



4. BACK OF HANDS



5. FINGERS INTERLACED



6. RUB FINGERNAILS



7. BASE OF THUMBS



8. RUB WRISTS



9. RINSE HANDS



10. DRY HANDS



11. TURN OFF TAP WITH TOWEL



12. DISPOSE TOWEL



HOW TO PUT ON A MASK



Clean your hands with soap and water or hand sanitiser before touching the mask.



Hold the mask by the ear loops. Bring the mask to your nose level and place a loop around each ear.



Ensure the mask covers your nose, then pull the bottom of the mask over your mouth and chin. Make sure you can breathe through the cloth face mask.



**Help stop the spread of COVID-19:
1. Stay at home as your curfew directs.**

**IF YOU HAVE ANY
QUESTIONS, CALL THE
COVID-19 HOTLINE
536-4500**

HOW TO WEAR A MASK

WHEN YOU WEAR A CLOTH FACE COVERING, LEAVE IT ON. DON'T PULL IT UP OR DOWN



DON'T: Wear below your nose.



DON'T: Leave your chin exposed.



DON'T: Push to rest on top of your head.



DON'T: Cover just the tip of your nose.



DON'T: Push under your chin.



DON'T: Wear loosely with gaps.



DO: Wear your mask so the top comes close to the bridge of your nose and the bottom is under your chin.

2. Wash your hands often with soap and water or use hand sanitiser for at least 20 seconds.

IF YOU HAVE ANY QUESTIONS, CALL THE COVID-19 HOTLINE 536-4500

HOW TO TAKE OFF A MASK



Be careful not to touch your eyes, nose and mouth when removing your mask.

Avoid touching the front of the mask.

Only touch the ear loops and gently lift and remove the mask.



Place the used mask in a resealable plastic bag.

Wash your face soap and water or use face wipes



Clean your hands with soap and water or hand sanitiser.

Wash and sanitise used masks.

Keep clean masks in one bag and used masks in another bag.

3. Avoid close contact. Maintain 6ft/2m physical distance from others.

IF YOU HAVE ANY
QUESTIONS, CALL THE
COVID-19 HOTLINE
536-4500

CARING FOR YOUR MASK



CovidBarbados



How long should I wear a cloth mask?

Cloth masks should be changed after every 3-hours or as soon as they become damp.

Carry two resealable plastic bags. Keep clean masks in one bag and used masks in the other bag.

After you remove the used mask and bag it, wash or sanitise your hands.

How do I clean & sanitise a cloth mask?

Wash with hot soapy water for 30 mins.

When dry, store in a resealable plastic bag.

Wash or sanitise your hands immediately after touching used masks and before touching clean masks.



4. Do not touch your face and practise good respiratory hygiene.

IF YOU HAVE ANY QUESTIONS, CALL THE COVID-19 HOTLINE 536-4500